



# Optimal Resource Recovery

Woodlawn Alternative Sorting  
& Processing Facility





## Veolia Environmental Services

### Responding to the needs for greater resource recovery

The NSW Waste Avoidance and Resource Recovery Strategy 2003 challenges the municipal and commercial sectors of NSW with a target of dramatically increasing the recovery of materials from waste.

Veolia is helping to meet this challenge by developing a new alternative waste treatment facility: the Woodlawn Alternative Sorting and Processing (WASP) facility. The WASP facility has been designed to recover resources from waste. This new facility will be located at the Woodlawn Eco-Precinct, complementing the existing resource recovery activities of the Woodlawn Bioreactor.



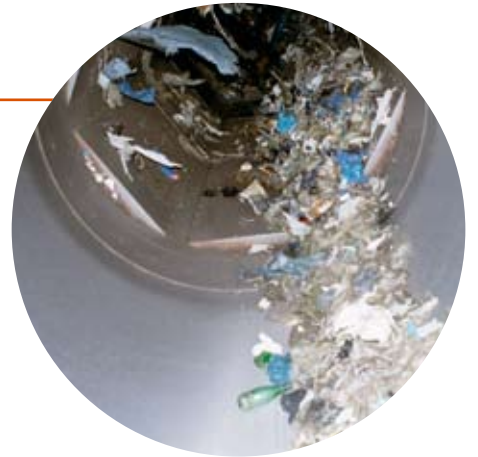


## The Waste Treatment Process

Waste received at WASP is sorted by purpose built low speed shredders and trommel screens. These separate waste into organic and inorganic streams for further processing. The system separates ferrous and nonferrous metals from both streams using magnetic and eddy current separators.

The organic part of the waste is composted in open windrows to produce a range of compost materials that will be used in rehabilitation and landscape projects on site. The organic waste will be kept in windrows for 8 to 10 weeks so that it becomes biologically stable and odour free.

Recyclables are sorted by hand from a conveyor belt and separated for transport for further processing. WASP can also produce a substitute fuel product from the inorganic part of the waste stream. Veolia will seek approval to use this product as a replacement for fossil fuels.

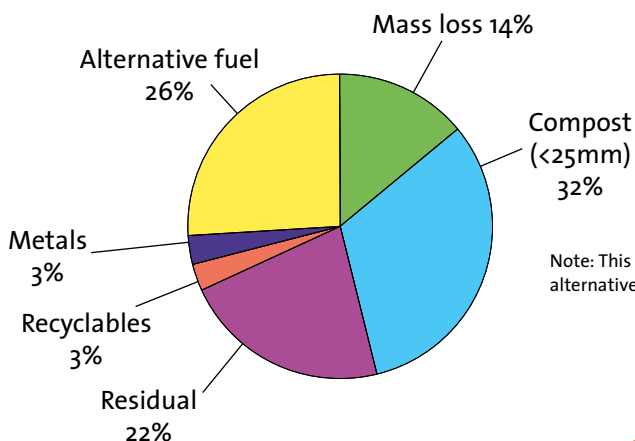


## Resource Recovery

WASP has the potential to divert up to 80% by weight of the waste it receives. The process recovers:

- > Metal
- > Glass
- > Plastics
- > Organics

These products are recycled and re-used, conserving the use of virgin materials. The recovery of recycled materials and the diversion of waste from landfill will help reduce the greenhouse gas impact of waste disposal in NSW.



Note: This chart is an estimate based on design specifications. Use of some residual fraction as alternative daily cover in the Woodlawn Bioreactor may further increase diversion levels.

## Woodlawn Eco-Precinct

The Woodlawn Eco-Precinct demonstrates sustainable development in action. Woodlawn, a former mine site located 250km south-west of Sydney, is now owned by Veolia. The Woodlawn Bioreactor is the first waste processing facility at the Eco-Precinct, and has been operating since September 2004. The Bioreactor receives waste from Sydney, which is transported to the site by rail.

The Woodlawn Bioreactor processes waste to produce biogas, which is used to generate renewable electricity.

Other projects under development at Woodlawn include a 50MW windfarm, and rehabilitation of the Woodlawn mine site using composted organic material from the WASP.

For more information please call:  
Group General Manager -  
Marketing on +61 2 8571 0000

### Veolia Global Resource Recovery Expertise

- > \$190 million invested by Veolia Environnement into Research and Development each year
- > 7 million tonnes recycled each year
- > 100 Composting facilities
  - Producing 700,000 tonnes of compost
- > 219 Waste sorting and recovery facilities
  - Recovering 2 million tonnes of cardboard and paper
  - Recovering 1.1 million tonnes of construction materials
- > 433 waste drop-off centres managed
- > 277,000 tonnes of contaminated soil treated



Veolia Environmental Services – call us for complete environmentally sound solutions:

#### NATIONAL OFFICE

Level 4, 65 Pirrama Rd  
Sydney, NSW 2009  
Ph: +61 2 8571 0000  
national@veolia.com.au

#### QUEENSLAND

166 Boundary Rd  
Rocklea, QLD 4106  
Ph: +61 7 3275 0111  
qld@veolia.com.au

#### NORTHERN TERRITORY

13 Beaton Rd  
Berrimah, NT 0828  
Ph: +61 8 8947 8947  
nt@veolia.com.au

#### NEW SOUTH WALES

Cnr Unwin & Shirley Sts,  
Rosehill, NSW, 2142  
Ph: 132 955  
nsw@veolia.com.au

#### VICTORIA

Level 1, 85 Buckhurst St  
South Melbourne, VIC 3205  
Ph: +61 3 9626 2222  
vic@veolia.com.au

#### SOUTH AUSTRALIA

500 Churchill Rd  
Kilburn, SA 5084  
Ph: +61 8 8260 2122  
sa@veolia.com.au

#### TASMANIA

75 Mornington Rd  
Mornington, TAS 7018  
Ph: +61 3 6244 0000  
tas@veolia.com.au

#### WESTERN AUSTRALIA

4-6 Rivers St  
Bibra Lake, WA 6163  
Ph: +61 8 9418 9300  
wa@veolia.com.au

[www.veoliaes.com.au](http://www.veoliaes.com.au)



ORG-COL-000-040-2

